



EN



Degree of difficulty

Instruction **HANGING BASKET**



Materials from Gütermann

- Sew-all thread in matching colours
- Cotton fabric 145 cm wide, Collection BLOOMS:
- 0.30 m flower pattern in light blue-multi-colour
- 0.30 m leaf rosette pattern in light blue-white
- 8.0 m braided ribbon in light blue
- 0.50 m bias binding in light blue

In addition

- 0.30 m iron-on fabric inlay G700, 90 cm wide
- Pattern paper
- Metal ring with \varnothing 30 mm
- Flower pot, approx. 13–14 cm high, \varnothing 13 cm (top) and \varnothing 9–10 cm (base)

Tools

- Sewing machine
- Iron
- Scissors
- Ruler
- Tape measure
- Tailor's chalk or textile marker pen
- Pins

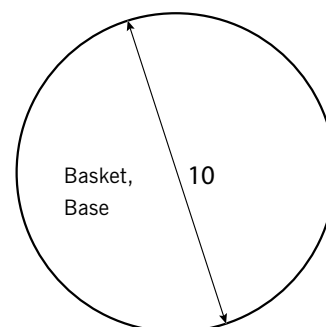
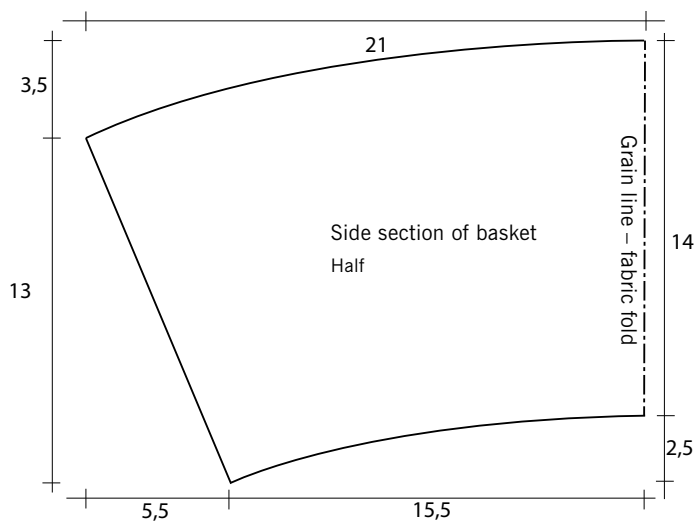
Preparation

- Draw the side section and the base on the pattern paper according to the dimensions in the pattern.

Cutting

- Side section: 1x each on the fold in flower pattern and leaf rosette pattern, 2x on the fold in fabric inlay
- Base: 1x each in flower pattern and leaf rosette pattern, 2x in fabric inlay

Cut all pieces except the upper basket edge with 1 cm seam allowance.





1. Iron the fabric inlay onto the wrong side of all basket sections and base sections. In order to do this cover them with a damp cloth and press the iron down in 12-second steps. Lay the parts flat and leave to cool for approx. 30 minutes after fixing.



2. Lay the two side sections of the basket on top of one another wrong sides together. Trim the side edges and lower curved line. Also trim the base sections when laid together, wrong sides facing.



3. Lay the vertical edges of the basket section right sides together and pin. Sew the seam, leaving the seam allowance. Iron the seam allowances apart. Place the lower opening edge right sides together onto the base, easing the side section slightly. Stitch the seam at the seam allowance. Iron the seam allowances into the side section. Turn the basket.



4. Pin the opened bias binding along the upper, inner edge with right sides together, laying the end approximately 1 cm under the beginning. Stitch around along the fold line of the bias binding. Wrap the folded bias binding over the edge from the inside to the outside and pin all around, also tacking if you wish.

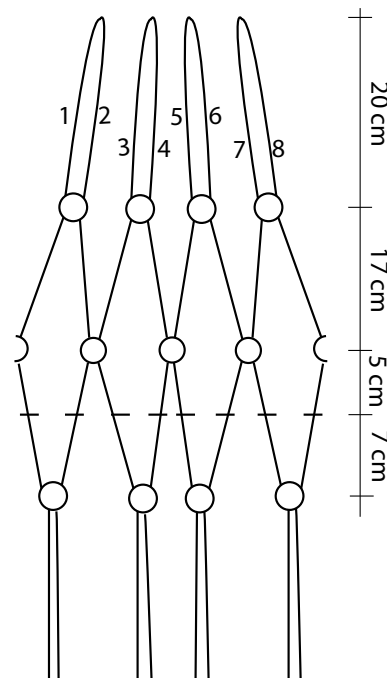


5. Fold the four 2.0 m sections of braided ribbon in half. Follow the knotting scheme, starting in the middle and knotting braided ribbon 1 with 2, 3 with 4, 5 with 6 and 7 with 8. Check that all the knots are at the same height from the middle. Now knot braided ribbon 2 with 3, 4 with 5, 6 with 7 and 8 with 1 about 17cm below the first knots. Check the location of the knots here also. The third row of knots is approx. 12 cm below the 2nd row: now knot braided ribbon 1 with 2, 3 with 4, 5 with 6 and 7 with 8 again. Check the position of the knots and leave the remaining braided ribbon to hang down. Make a mark at a distance of 7 cm above the last knot on each braided ribbon. The braided ribbons are attached to the upper edge of the basket at this height.



6. Measure the upper circumference of the basket and divide this figure by 8. Mark this distance 8 times on the edge, starting from the side seam. Attach the braided ribbons by the marked point above these markings so that the braided ribbons 1 to 8 are around the edge of the basket. Topstitch the bias binding close to the edge so the braided ribbons are fixed in place. Join the 8 hanging braided ribbons under the basket and knot them together. Knot the hanging braided ribbons individually. Insert the upper loops of braided ribbon into the ring for hanging.

Knotting scheme



Gütermann GmbH

Landstr. 1

DE- 79261 Gutach-Breisgau

Tel +49 76 81 21-0

Fax +49 76 81 21-449

contact@guetermann.com

www.guetermann.com

