



# Gütermann creativ



EN



Degree of difficulty

Instruction **WEEKENDER**



## Materials from Gütermann

- Sew-all Thread in matching colours
- Sewing thread Cotton 30, 300 m multicolour
- Cotton fabric 145 cm wide, Collection LIGHT BREEZE:
- 0.40 m hexagon rosette pattern in mauve yellow
- 0.25 m tile pattern in mauve, yellow and white
- 0.70 m cotton fabric in mauve

## In addition

- 0.90 m yellow piping (cord piping)
- Zipper, 45 cm, in mustard yellow
- Silver key lock, 26 mm wide
- 3 silver half rings, 40 mm wide
- 4 pins
- 2 carabiners with ring, 40 x 60 mm
- 1 silver ladder buckle, 40 mm
- 1.50 m webbing in mustard yellow, 3 cm wide
- 1.10 m Bundfix (width 2.5 cm)
- 0.90 m volume fleece H 630, 90 cm wide
- 0.90 m fabric inlay G 710, 90 cm wide
- 0.40 saddlebag insert S 520, 45 cm wide

## Tools

- Sewing machine
- Iron
- Scissors
- Compass (or tape measure)
- Ruler and tape measure
- Tailor's chalk or fabric marker pen
- Pins
- Hammer
- Eyelet pliers

**Size 42 cm x 27 cm x 18 cm**

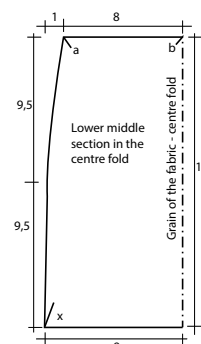
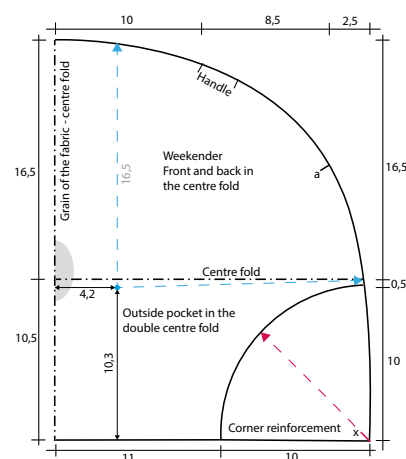
## Cutting

Front and back side: Mark rectangle measuring 21 cm x 27 cm; mark transverse line of the outer pocket at a height of 10.5 cm; pierce with compass into the blue dot, mark quarter circle (blue line) at 16.5 cm; extend upper edge to midline; extend lateral rounding from the circle to the base; mark corner reinforcement with compass (pink line). Corner reinforcement and outer pocket: copy out of the front as pattern pieces. Lower middle section: Mark after cutting, cut out. **Download pattern in original size at [www.guetermann.com](http://www.guetermann.com).**

## Cutting

- Hexagonal pattern: Base 43 cm x 18 cm; front and back 2x (lay fabric fold in the middle of the pattern); closure tape 6 cm x 28 cm
- Tile pattern: Lower middle part 2x; corner reinforcement 8x; strap attachment 6 cm x 8 cm 2x
- Cotton fabric in mauve: Outside pocket 1x; upper middle section 42 cm x 7.5 cm 4x; front and back side 2x (lining); handle 8 cm x 52 cm (without seam allowance) 2x; base 42 cm x 18 cm (lining)
- Fabric inlay and volume fleece: Front 2x each; outside pocket / half 1x each; corner reinforcement 4x each; upper middle section 2x each; lower middle section 2x each; only fabric inlay: Closure tape 6 cm x 28 cm; strap attachment 6 cm x 8 cm 2x
- S 520: Base 42 cm x 18 cm 1x

Cut all pieces with a seam allowance of 1 cm.





**1.** Place volume fleece on the wrong side of the cover fabrics of the following pieces with the coated side facing down: front and back, outer pocket to the folded edge; corner reinforcement 4x; upper middle sections 2x; lower middle parts 2x. Place the fabric inlay onto the same cut pieces for the lining bag, place the inlay directly adjoining the volume fleece on the outer pocket also onto the fastener tape and the belt fastenings 2x. Also iron the cover fabric and lining base with S 520. Cover all parts with a damp cloth and iron on in 12-second increments. Allow to cool for 30 minutes. Iron Bundfix onto the handles.



**2.** Trim the strap ends for the **shoulder strap**. Slide one end of the strap through the carabiner ring, after 6 cm fold the strap to the inside and stitch with a double seam (left carabiner). Thread the second end through the ladder buckle (centre): from the back to the front, over the bar and back again. Slide the end through the second carabiner ring (right) and back to the ladder buckle (middle). There again from the back, forward over the bar and then back, while pulling the previously threaded webbing to the loop; this makes it easier to thread the second layer. Fold the end over 6 cm from the buckle and fix with a double seam.



**3.** Fold the strips for the **handles** (mauve) corresponding to the punched lines in the the Bundfix: fold the seam allowances to the left side and iron, then fold the edges open and iron again. Stitch the long edges together close to the edge. Wind about half of the thread from the cotton 30 multicolour onto a bobbin. Next, stitch the handles tight to the edge with the cotton 30 multicolour using a narrow decorative stitch. Fold the **closure strip** with right sides facing and stitch the longitudinal seam. Trim the seam allowances. Lay the seam in the middle, iron the seam allowances open. Stitch a transverse edge trim and clip seam allowances. Turn the handle and iron again.



**4.** Fold the section for the **outside pocket** lengthwise with wrong sides facing and iron again. The side with the volume fleece faces outwards. Stitch along the folded edge with decorative stitch and Cotton 30 multicolour (upper and lower thread). Place 2 **corner reinforcements** with right sides facing, pin along the curve and stitch the seam. Trim the seam allowances and clip vertically to the seam. Turn corner, shape and iron again. Put the cord piping underneath the curve, stitch close to the edge. Pin the corner to the outside pocket. Stitch through all layers close to the cord with using the zipper foot. Work all the corners, on the back of the bag without side pocket. Place the outer pocket flush with the bottom edge and the side edges and pin to the front of the bag.



**5.** Place 2 sections of the **upper middle sections** (1x with fabric inlay, 1x with volume fleece) with right sides facing. Place the zipper along the length between the layers, leaving the top of the zipper on the pattern piece with volume fleece (= outer side). Stitch the zipper. Stitch 0.5 cm next to the cut edge, with the seam allowances at the beginning and the end open. To the same thing with the second half of the zipper. Fold middle parts with wrong sides facing and iron. Pin together and stitch with a decorative stitch and Cotton 30 multicolour 0.3 cm next to the insert seam on both sides. Fold the strips for the **strap attachment** with wrong sides facing, stitch the seam. Turn the strip over, place the seam in the middle and iron. Slide a half ring onto each to the middle. Stick the ends of the straps on the middle right on both sides over the ends of the zipper on the upper middle part.



**6.** Pin the **lower middle section** of outer fabric with right sides facing on the transverse edge of the upper middle section of outer fabric (do not catch the seam allowances of the lining). Stitch the seam, including the zipper ends and the belt attachment (carefully stitch over it). Do the same thing for the second side. Pin the lower middle sections of the lining (with fabric inlay) with right sides together on the upper centre sections of the lining and stitch the seam, leaving the zipper in the middle. Fold the lower middle sections of the outer fabric and lining with wrong sides facing and iron away from the seam.



**7.** Pin both handles wrong side to right side on the upper outer middle sections, also pin the fastener tape on the centre of the back of the bag, with the cut edges wrong side to right side. Pin the **front side panel with outside pocket and corner reinforcement** with right sides together to the middle section (without fastener tape), observe the insert markings. Stitch the seam and include the handles. Trim at the curves, iron the seam allowances towards the middle section. Do the same for the **back of the bag**, including the handle and the fastening tape. Do the same for the **lining of the front and back** (without handle and sealing tape). Insert the lining into the bag with the seams on top of one another. Attach the handles from the outside onto the seam allowance of the side part using double stitching through all layers.



**8.** Pin the outer **base** to the outer bag with right sides facing. Stitch the seam all around. Clip the corners at an angle and iron the seam allowances. Stitch the **lining base** to the front and back bag with right sides facing as well as to the middle sections of the lining bag. Leave a 15-20 cm long slot on the edge to turn out. Iron the seam allowances towards the base. Pull the pocket through the slit, stitch close to the edge with the open slit edges on top of one another, or sew by hand. Push the lining into the bag, place the lining corners and the seams on top of one another.



**9.** Hammer the **pins** 2.5 cm from the edge of the base through the outer material and lining. Attach the lower part of the closure on the front of the bag in the middle above the outside pocket (light grey oval on the pattern) according to manufacturer's instructions. Slide a half ring onto the **sealing tape** to the attachment seam. Fold the tape onto the upper middle section as a 1 cm loop. Fix the seam in place with double stitching through all layers. Insert the top part of the closure in the middle of the sealing tap, clip the eyelet into place using the eyelet pliers. Use a hammer to close the rivets. Attach a luggage tag to the half ring.

#### Gütermann GmbH

Landstr. 1

DE- 79261 Gutach-Breisgau

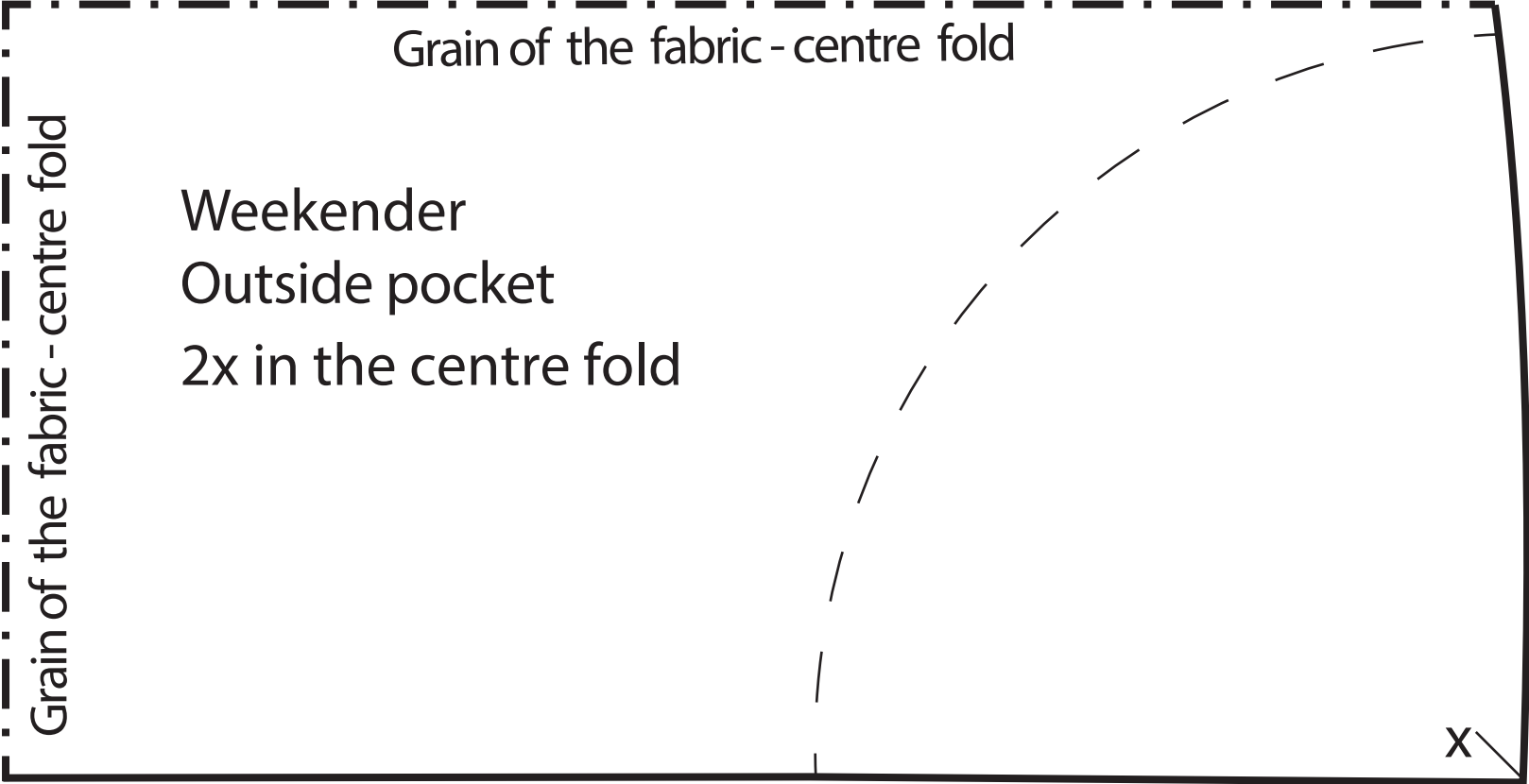
Tel +49 7681 21-0

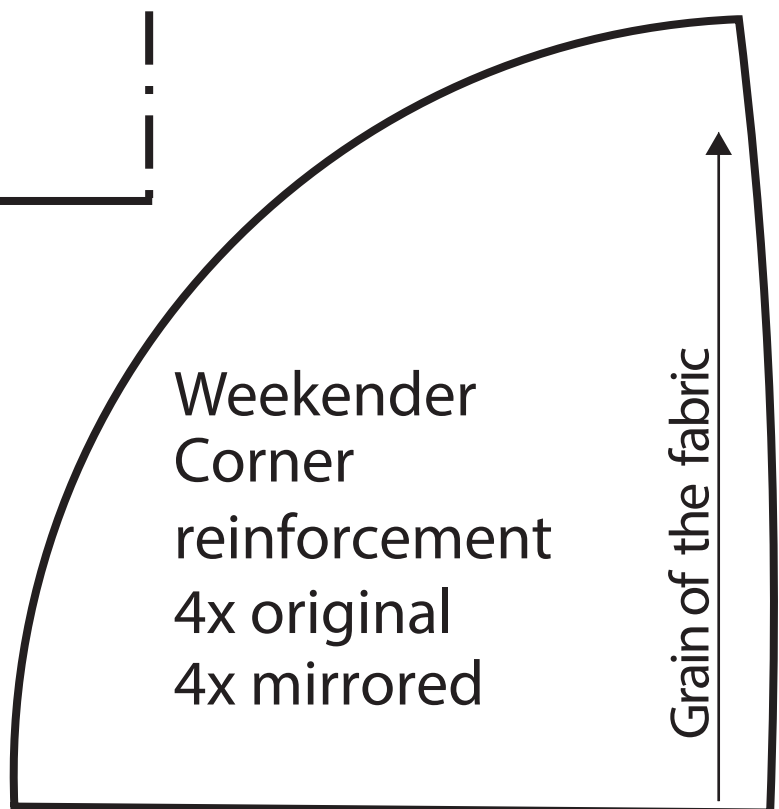
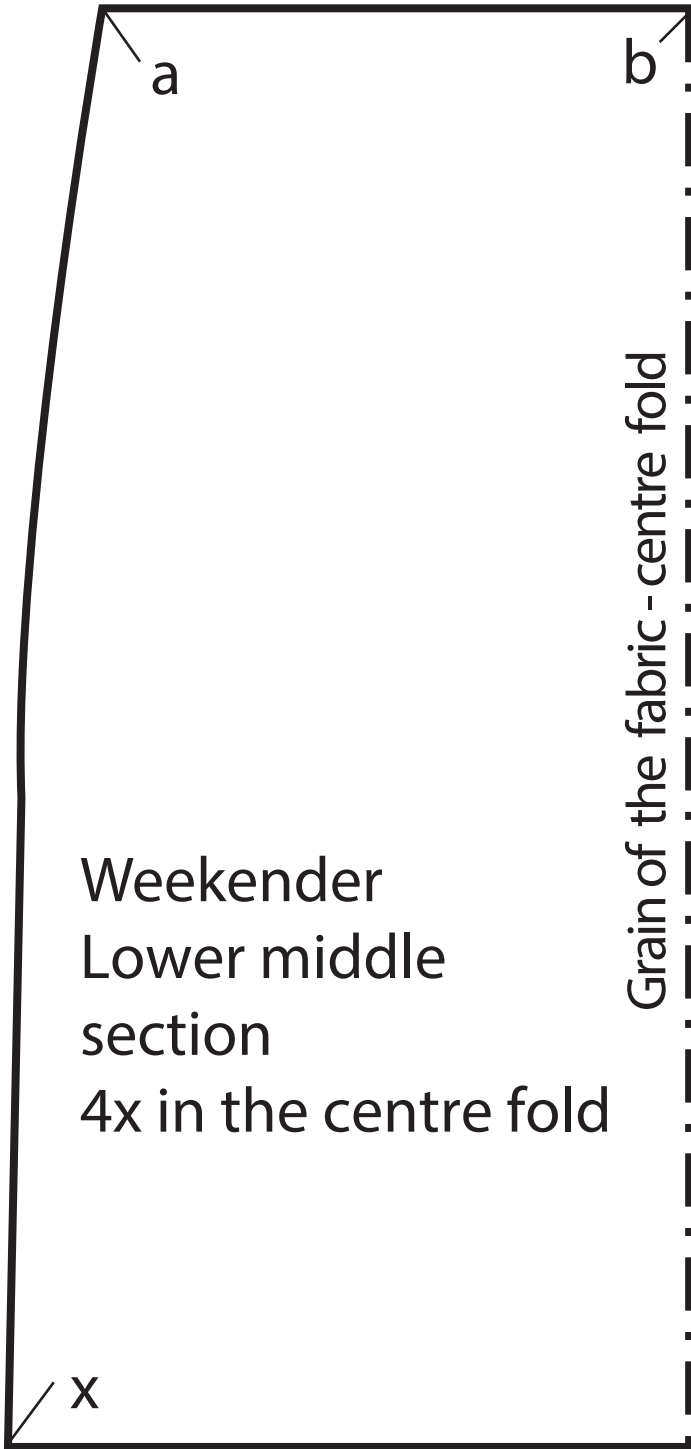
Fax +49 7681 21-449

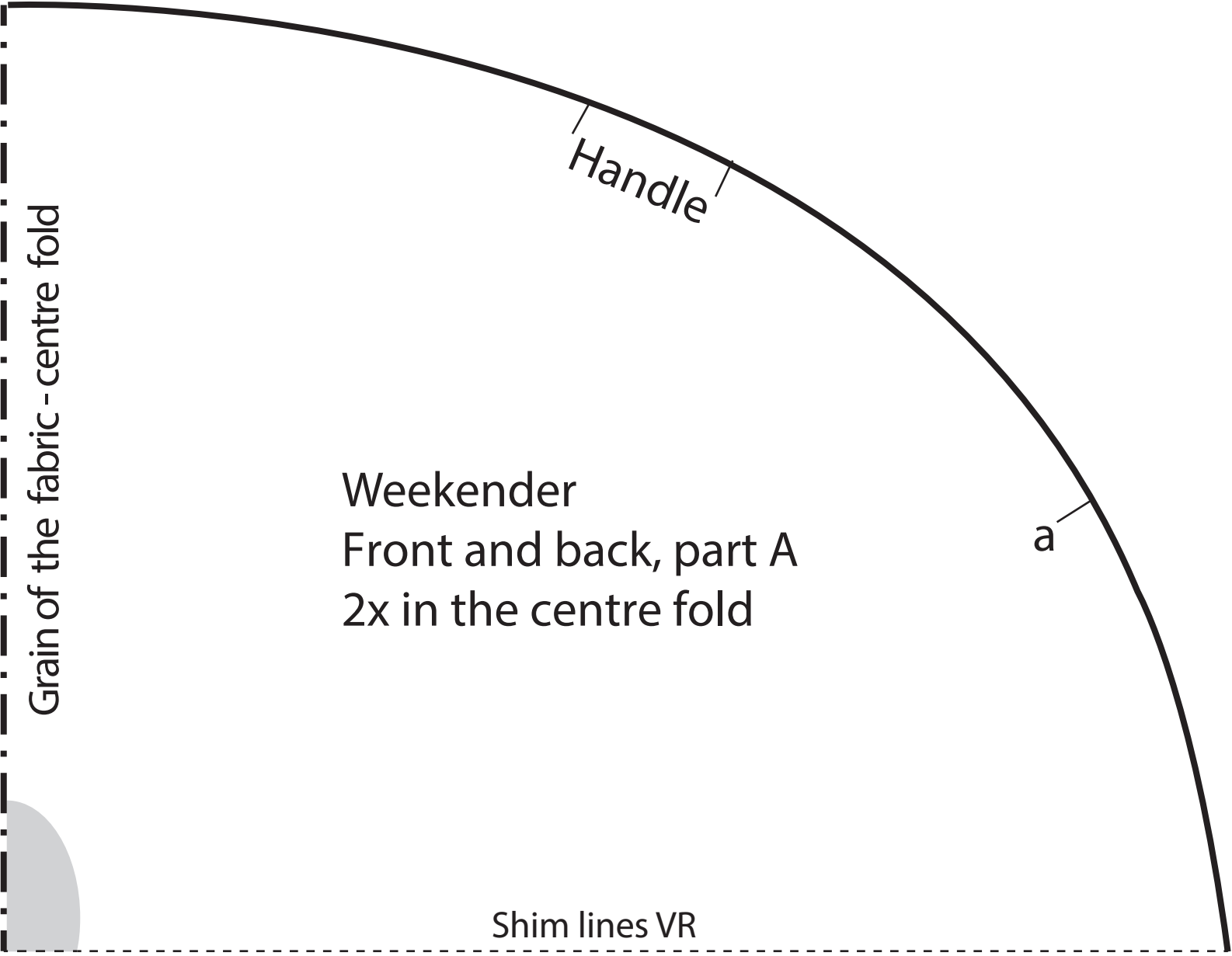
contact@guetermann.com

www.guetermann.com









Grain of the fabric - centre fold

Handle

a

Weekender  
Front and back, part A  
2x in the centre fold

Shim lines VR

